

Progesterone Shifts the Pinopodes Expression of Mouse Endometrium to Pre-Implantation Time After Ovarian Hyperstimulation

Mojdeh Salehnia , Ph.D.

Department of Anatomy, School of Medical Sciences, Tarbiat Modarres University, Tehran, Iran.

Background: The aim of this study was to determine the correlation between ultrastructural studies for pinopodes expression after ovarian hyperstimulation and progesterone injection in mice.

Materials and Methods: Adult *NMRI* mice were superovulated using human menopausal gonadotropic (hMG) and human chorionic gonadotropic (hCG) hormones; after that, daily injection of progesterone (1 mg/mouse) was performed. Animals were sacrificed by cervical dislocation 3.5 and 4.5 days after hCG injection. Tissues of uterine horns were obtained and processed for scanning (SEM) and transmission (TEM) electron microscopy studies. The pseudopregnant control samples were studied same as experimental groups.

Results: The SEM and TEM observations showed that in control groups on 3.5 days of pregnancy, there were some pinopodes. All apical cell surfaces expressed these projections on the fourth day. In progesterone-injected group, well developed pinopods were expressed 3.5 days after hCG injection and they were transformed to small projections on the fourth day following hCG injection. Also, the life span of pinopods was limited to a short time. At the TEM levels, the pinopods were seen as swelling process on the apical surface, which were more pronounced on day 3.5 of hCG injection in hyperstimulated and progesterone injection.

Conclusion: The progesterone may cause premature expression of pinopodes and the implantation failure after ovarian induction may be due to these timing changes.

Key words: *Implantation Window, Pinopodes, Progesterone, Electron Microscopy*

Introduction

The surface of endometrium undergo cyclic changes which influence on embryo attachment and implantation. The high level of hormones which produce during ovarian hyperstimulation may effect on the fine structure of endometrium. Several markers of implantation window have been proposed including endometrial morphology, expression and secretion of some cytokine such as leukemia inhibitory factor and appearance of cytoplasmic microprojections, named pinopodes (Lessey, 2001; Lessey, 2001b).

These endometrial cell surface projections involve in the pinocytosis of uterine secretion and macromolecules in mice (Nilsson, 1958). The pinopodes have been observed in short time about 24-48 hours at the time of implantation; therefore, their appearance is an indicator of implantation window in mammals (Nikas et al., 1995). Presence and development of pinopodes mainly depend on the ovarian hormones, especially progesterone (Singh et al., 1996). The high concentration

of estrogen interferes with normal formation of pinopodes (Martel et al., 1991; Simon et al., 1995). Administration of exogenous gonadotropic hormones such as hMG and hCG lead to increased secretion of estrogen and progesterone (Kramer and De Wet, 1994). Some investigators showed that ovarian stimulation did not have harmful effect on the endometrial receptivity (Paulson et al., 1997; Kolb et al., 1997). Kolb et al. (1997) reported that an advanced development of the ultrastructure of endometrium surface epithelium in ovarian hyper-stimulated cycles, which may result in an alteration in the window of implantation. In contrast, there are some reports on a high incidence of dysfunction of endometrium under high physiological level of estrogen and progesterone. The high level of these hormones could affect the endometrial receptivity (Kramer and De Wet, 1994; Karmer et al., 1993; Valbuena et al., 1999). Some works have been focused on the ultrastructural characteristics of endometrium surface after controlled ovarian hyperstimulation (COH) using SEM study (Psychoyos and Nikas, 1994; Nikas et al., 1999). The objective of this study was to evaluate the correlation between ultrastructural studies for pinopodes expression on the mouse endometrium at the implantation periods after hMG/hCG and progesterone administration.

Corresponding Author:

Mojdeh Salehnia, Department of Anatomy, School of Medical Sciences, Tarbiat Modarres University, P. O. Box: 14115-111, Tehran, Iran.

E- mail: mogdeh@dr.com.

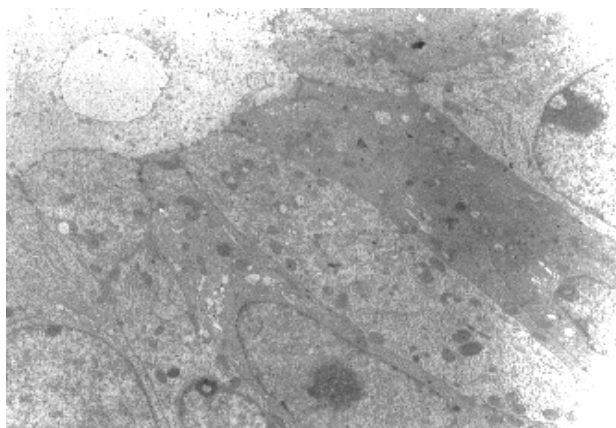


Figure 1: Electron micrograph of surface of control mouse endometrium on 3.5 days after pseudopregnancy ($\times 5100$).

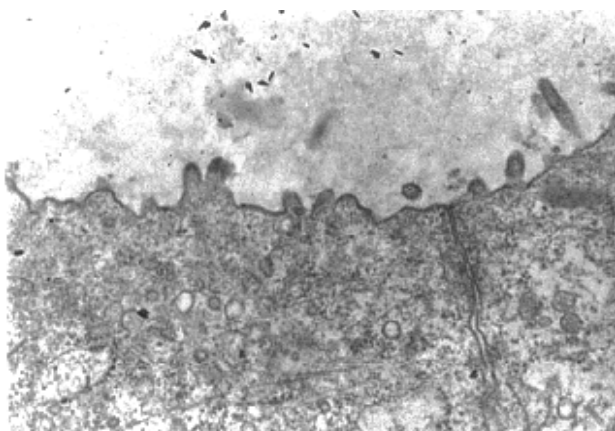


Figure 2: Electron micrograph of surface of hyperstimulated progesterone injected mouse endometrium on 4.5 days after hCG injection ($\times 14450$).

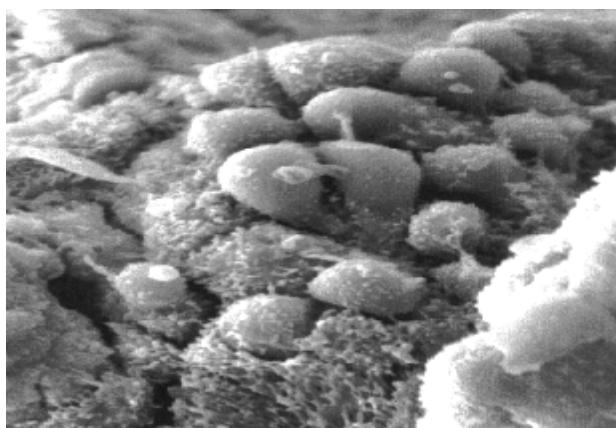


Figure 3: Scanning electron micrograph of surface of mouse endometrium 3 days after pseudopregnancy in non-stimulated control group ($\times 4000$).

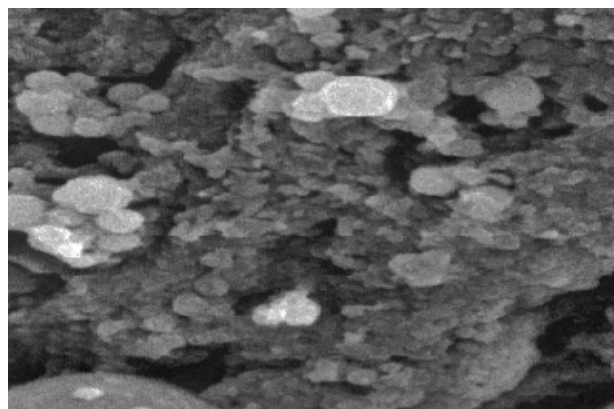


Figure 4: Hyperstimulated and progesterone injected group 3 days after hCG injection. Well developed pinopodes were seen ($\times 4000$).

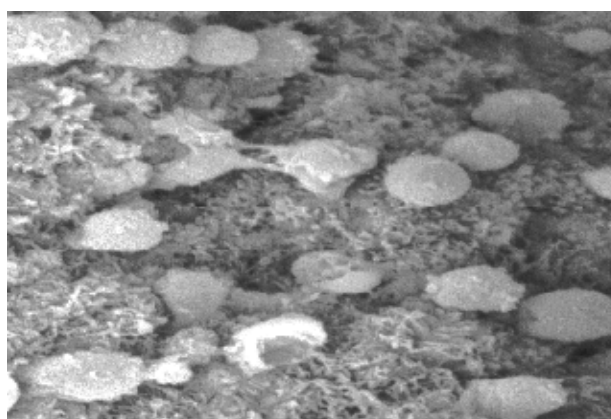


Figure 5: Hyperstimulated and progesterone injected group on the 4 day of hCG injection. Note, large pinopodes transformed to small sized projection and also the number of microvilli decreased ($\times 4000$).

housed under 12h light: 12h dark condition. These were randomly divided into two groups:

Group 1: Hyperstimulated mice. Female mice were superovulated with an intraperitoneal injection of 10 i.u. hMG, which were followed 48h later by another injection of 10 i.u. hCG. After superovulation, daily subcutaneous injections of progesterone (1mg/mouse) were performed (Miller, 1979). On the evening of the second injection the mice were rendered pseudopregnant by mating artificially using a plastic sswap, which was turned on the vaginal orifice several times.

Group 2: Control group. Femlae mice were rendered pseudopregnant by mating artificially such as hyperstimulated group.

Tissue preparation

The mice were sacrificed by cervical dislocation at the third and forth days after hCG injection or mating. The samples were obtained from the 1/3 middle part of uterine horns to be fixed immediatly for electrone microscopy studies.

Transmission electron microscopy

Materials and Methods

Animals

Forty female NMRI mice aged 6-10 weeks were

Tissues were fixed in 2.5% glutaraldehyde in sodium cacodylate buffer (PH 7.2) at 4°C for 1.5 h and post fixed in 1% osmium tetroxide for 1 h. The tissues were dehydrated in graded ethanol concentration followed by acetone then were embedded in epon 812 resin. Semi-thin sections were stained with 1% toluidine blue. Ultra-thin sections were stained with alcoholic uranyl acetate and aqueous lead citrate. The sections were examined using Zeiss transmission electron microscope.

Scanning electron microscopy

The lumen of uterine horns were washed several times by flushing with phosphate buffer to remove mucous secretions, washed with 0.2 M sodium cacodylate buffer (PH 7.2). The samples were fixed primary with 2.5% glutaraldehyde in cacodylate buffer (PH 7.2), after washing with the same buffer, post fixed using 1% osmium tetroxide. The specimens were dehydrated first in unguarded concentrations of ethanol (50%, 70%, 80%, 90% and 100%) and then in acetone. They were dried, mounted and coated with gold particles and examined using a Philips scanning electron microscope.

Results

TEM

Micrographs of non-stimulated samples on 3.5 days of pseudopregnancy showed that epithelial lining of uterine horns were oval with chromatin nuclei surrounded by thin marginal heterochromatin at the implantation period. These epithelial cells exhibited some large microvilli (Figure 1). Their cytoplasm was rich in organelles such as rough endoplasmic reticulum, polyribosomes and mitochondria. A few lipid droplets with moderate electron density were seen on the subnuclear region.

The organelles of the samples from hyperstimulated and Progesterone injected animals were the same as control group. The stromal cells had polyhedral morphology with elongated nucleus. The intercellular spaces were smaller than control pregnant groups. The characteristics of stromal cells were protein secreting cells.

In all groups, the normal microvilli were seen, but these structures disappeared, although some smooth and swollen projections were abundant 3.5 days after hyperstimulation and progesterone injection (Figure 2). It seems that in this group after 4.5 days of hCG injection, microvilli reformed on the other hand the lifespan of smooth projections was short time (Figure 3).

SEM

Three days after artificial mating the apical cell surface was dome shape and the border of the cells were well defined. The microvilli of these cells were short and the tips of these microvilli dilated. In some cells, the microvilli were disappeared and transformed to fungi shape projection named as pinopodes. These pinopodes were located on the corner of the cells and the remaining surface was smooth (Figure 3). However, on the 4th day, all apical cell surface expressed these projections and a

lot of them were collapsed.

In the hyperstimulated and progesterone injected groups, 3.5 days after hCG the microvilli were disappeared in half of lining cells relatively. Pinopodes were formed and well developed as large spongy projections (Figure 4). In this group, the distinctive morphological changes were observed at the implantation time. A lot of microvilli disappeared and large pinopodes transformed to small projections (Figure 5).

Discussion

Our ultrastructural studies showed that in comparison of apical membrane of all groups, the microvilli were present; although the number of these structures had some changes. However, on the hyperstimulated and progesterone injected groups, the microvilli disappeared and another projections were seen without any glycocalyx on their surfaces on 3.5 day after induction. Our SEM studies showed that these projections were typical pinopodes or fungiform projections, which are implantation marker. It seems that in this group, the microvilli decreased in number and length by fusing together. The progesterone may cause premature expression of this structure.

Pinopodes were thought useful marker for endometrium receptivity in many species. Also, our results showed that after administration of progesterone, the well organized pinopodes were expressed over the surface of mouse endometrium. However, these projections were collapsed and transformed to small projections on forth days of hCG and progesterone injection. These characteristics are not apoptotic cells because our TEM study showed that these cells had normal fine morphology. Thus, these observations showed that progesterone injection after hyperstimulation could cause premature expression of pinopodes on the pre implantation time. Our hypothesis is that the presence of pinopodes depends on the progesterone and its balance with estrogen concentration. Also, Stavreus-Evers et al. (2001) showed that pinopod formation in human endometrium is associated with the concentration of progesterone and progesterone receptors.

In contrast to our results, it was shown that under hormone replacement therapy in human, the timing of the nidation window seems to be postponed for some two days and showed that administration of the progesterone antagonist on day 1 of rat pregnancy displaces the time of appearance of fully developed pinopodes from day 5 to 6 or 7 (Arianmanesh et al., 2002). Also, experience from oocyte donation programs in human show that women treated with estradiol and progesterone in hormone-controlled cycles have higher chance of conception when compared with women undergoing ovarian stimulation (Paulson et al., 1990). This may be due to a better priming of endometrium avoiding high oestradiol concentrations (Stavreus-Everse et al., 2001).

Although, there are many differences between mouse and human during implantation and pinopodes function,

our results showed that the life span of pinopodes was limited to a short time, which is changed during hyperstimulation regimes. Thus, this alteration in expression of pinopodes results in an alteration in the window of implantation. The alteration in implantation rate following ovarian hyperstimulation in animals may be due to these time changes, and progesterone injection may be effective to premature presence of pinopodes.

References

- Ertzeid G, Storeng R. (2001) The impact of ovarian stimulation on implantation and fetal development in mice. *Hum Reprod* 16: 221-225.
- Kolb BA, Najmabadi S, Paulson RJ. (1997) Ultrastructural characteristics of luteal phase endometrium in patients undergoing controlled ovarian hyperstimulation. *Fertil Steril* 67: 625-30.
- Kramer B, De Wet G. (1994) Exogenous gonadotropin administration affects the glycocalyx of rat endometrial epithelial cells during the period of implantation. *J Assist Reprod Gen* 11: 504-509.
- Kramer B, Magan A and De Wet G. (1993). Hyperstimulation affects vascular permeability at implantation sites in the rat endometrium. *J Assist Reprod Gen* 10: 163-168.
- Leesey B.A. (2001a) The role of the endometrium during embryo implantation. *Hum Reprod* 15: 36-50.
- Leesey B.A. (2001b) Endometrial receptivity and the window of implantation. *Bailieres Best. Pract. Res. Clin Obstet Gynaecol* 14: 775-880.
- Martel D., Monier M.N., Roche D., Psychoyos A. (1991) Hormonal dependence of pinopodes formation at the uterine luminal surface. *Hum Reprod* 6: 597-603.
- Miller BG. (1979) Delayed interactions between progesterone a low doses of 17 β -estradiol in the mouse uterus. *Endocrin* 104: 26-33.
- Navot D., Scott R.T., Droesch K., Veeck L.L., Liu H.C., Rosenwaks Z. (1991) The window of embryo transfer and the efficacy of human conception in vitro. *Fertil Steril* 55: 114-118.
- Nikas G, Develioglu OH, Toner JP, Jones HWJR. (1999) Endometrial pinopodes indicate a shift in the window of receptivity in IVF cycles. *Hum Reprod* 14: 787-792.
- Nikas G., Drakakis P., Loutradus D., Mara-Shoufari C., Koumantakis E., Michalas S., Psychoyos A. (1995) Uterine pinopodes as markers of the nidation window in cycling women receiving exogenous oestradiol and progesterone. *Hum Reprod* 10: 1208-1213.
- Nikas, G, Drakakis P, Loutradus D, Mara-Shoufari C, Koumantakis E, Michala S. (1995) Uterine pinopodes as markers of the "nidation Window" in cycling women receiving exogenous oestradiol and progesterone. *Hum Reprod* 10: 1208-1213.
- Nilsson O. (1958) Ultrastructure of mouse uterine surface epithelium under different estrogenic influences. 2. Early effect of estrogen administered to spayed animals. *J Ultrastruct Res* 2: 73-95.
- Paulson R.J., Saner M.V., Lobo R.A. (1990) Embryo implantation after human in vitro fertilization: importance of endometrial receptivity. *Fertil Steril* 53: 870-874.
- Paulson RJ, Sauer MV and Lobo RA. (1997) Potential enhancement of endometrial receptivity in cycles using controlled ovarian hyperstimulation with antiprogestins: a hypothesis. *Fertil Steril* 67:321-325.
- Psychoyos A, Nikas G. (1994) Uterine pinopodes as markers of uterine receptivity. *Assist Reprod Rev* 4: 26-32.
- Simon C., Cano F., Valbuena D. (1995) Clinical evidence for a detrimental effect on uterine receptivity of high serum estradiol levels in high and normal responder patients. *Hum Reprod* 10: 2432-2437.
- Singh M.M., Chaluhan S.C., Trivedi R. N., Maitra S.C, Kamboj V.P. (1996) Correlation of pinopod development on uterine luminal epithelial surface with hormonal events and endometrial sensitivity in rat. *Eur Endocrinol* 35: 107-117.
- Stavreus-Evers A., Nikas G., Sahlin L., Eriksson H., Landgren B.M. (2001) Formation of pinopodes in human endometrium is associated with the concentrations of progesterone and progesterone receptors. *Fertil Steril* 76: 782-791.
- Valbuena D, Jasper M, Remon J, Pellicer A, Sima C. (1999) Ovarian stimulation and endometrial receptivity. *Hum Reprod* 1: 2107-2111.